

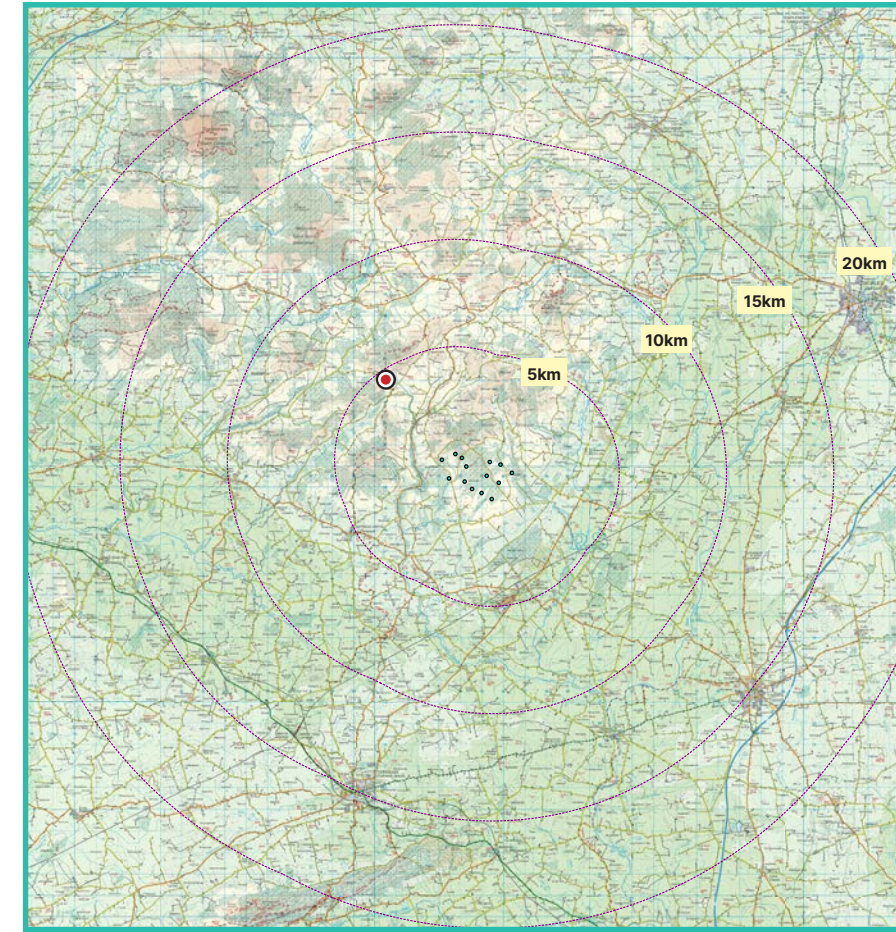
# View Point 03

# Multeen Way near Tooreen

## Photomontage 03

View from the Multeen Way near Tooreen peak, way-marked walking trail on the L5105 Local Road in the townland of Birchgrove. Located approximately 4.6km north-west of the nearest turbine (T07).

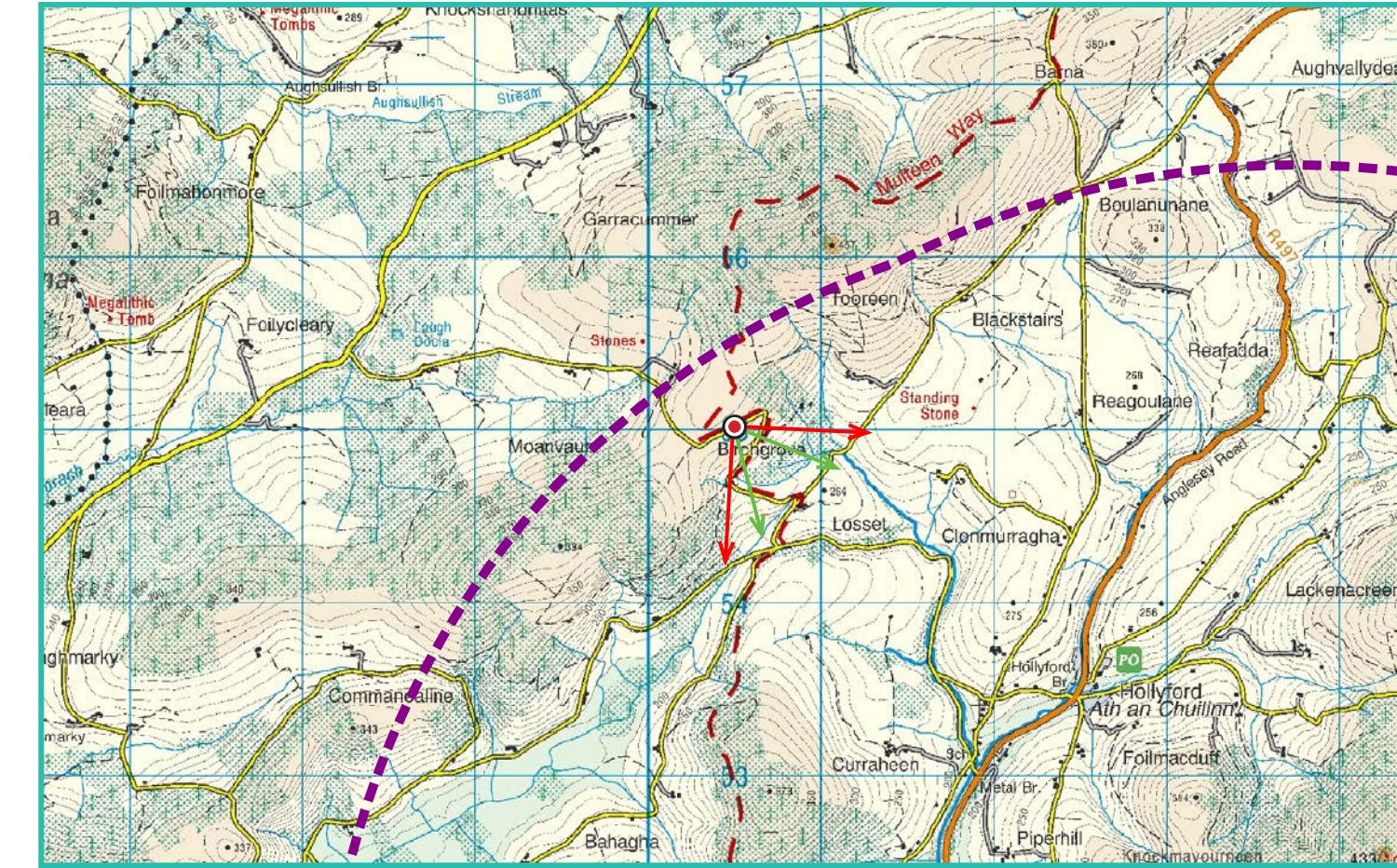
View point grid reference	E 590463 N 655059
Date of image taken	2024-09-11
Time of image taken	16:27
View point elevation	335m
Angle of Views	90° / 53.5°
View Direction (Image Centre)	138°
Number of proposed turbines visible in Photomontage	5/14
Turbine Hub Height	103.5m
Turbine Rotor Diameter	163m
Turbine Tip Height	185m
Montage Type	Type 4 Photomontage / Survey / Scale Verifiable
Camera & Lens	Canon 5D Mark III / Full Frame Sensor with a 50mm Lens
Tripod	Manfrotto 190X extended to approx 1.5m.
Map Licence	© Ordnance Survey Ireland. All rights reserved. Licence number CYAL50267517



View point relative to 20km radius.



View point relative to proposed wind farm site.



Detail of view point location.

### Map Legend

- Area shown in 90° view
- Area shown in 53.5° view
- View Point
- Proposed Carrow Wind Farm

### Wireline Legend

- Proposed Carrow Wind Farm
- Proposed Met Mast (103.5m)
- Existing Wind Farms
- Permitted Wind Farms
- Proposed Wind Farms

Prepared by  
MKO  
Planning & Environmental Consultants  
Tuam Road, Galway.

Tel: (091) 73 56 11  
E-mail: info@mkofireland.ie  
Website: www.mkofireland.ie

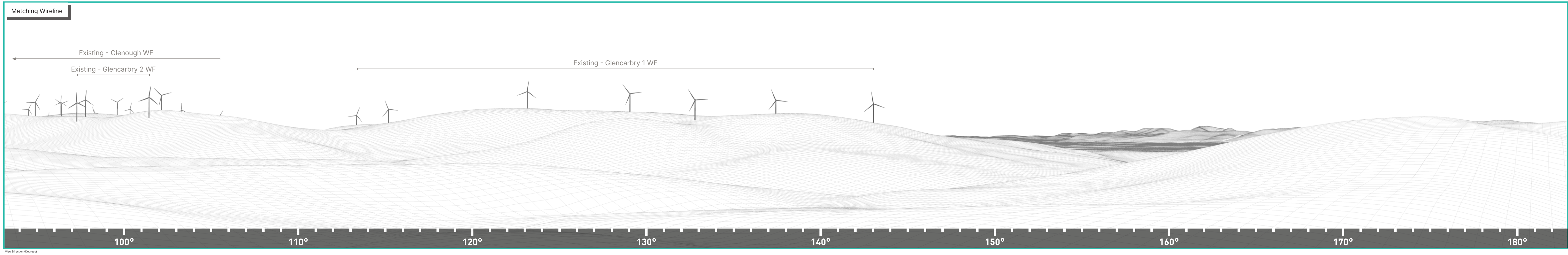


90° View Extent

Key Image at 120°



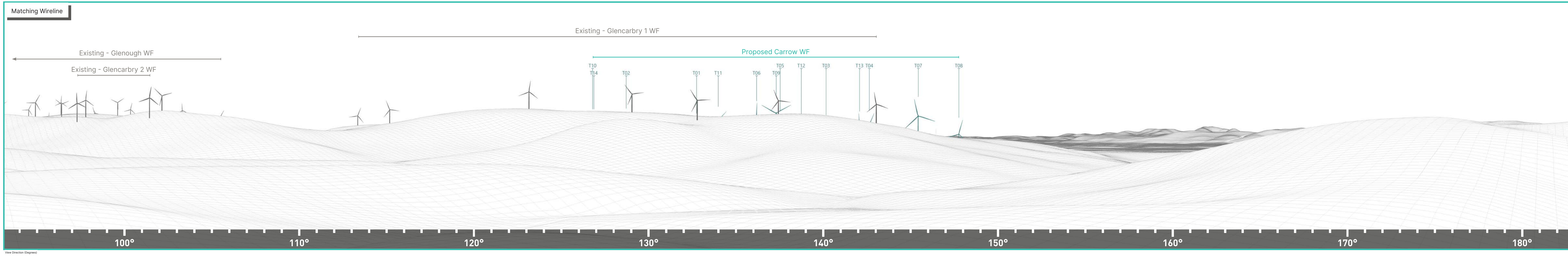
53.5° View Extent



Proposed Photomontage with Cumulative at 90°



Matching Wireline



Proposed Photomontage with Cumulative at 53.5°



120°

130°

140°

150°

160°

Matching Wireline

Existing - Glencarbry 1 WF

Proposed Carrow WF

T10

T14

T02

T01

T11

T06

T05

T09

T12

T03

T13

T04

T07

T08

120°

130°

140°

150°

160°